

PARCS UPDATE #17 – MARCH, 2011

1. CENSUS IS ESPECIALLY IMPORTANT FOR RESORT VILLAGES

Earlier this month, resort villages received a letter from Census Canada stating:

“Early in May, yellow census packages will be delivered to every dwelling in Canada – including those in cottage country – providing residents the information they need to complete the census online or on paper.

What if you receive a census package at both your cottage and your regular residence? In that case, provide the information at the dwelling where you reside most of the time. On the second questionnaire—the one received at your secondary residence—provide the address for your principal residence, your phone number (or phone numbers, if applicable) and your name on page 3 in the section IF THIS ADDRESS IS.”

Under the current formula for calculating the revenue sharing grants for resort villages, Municipal Affairs uses per-capita allocations based on the most recent Statistics Canada census figures. Should this system continue in the future, the implication is that, ***for the next 5 years, resort village grants will be based on the census count taken this spring!***

It is imperative that resort villages make every effort to ensure that all persons whose cottage is their primary residence are part of the 2011 census count. This concern is reflected in the comments from the administrator at the Resort Village of Lumsden Beach (see insert).

In response to these concerns, PARCS contacted the Census Canada manager for Saskatchewan. She was aware of the challenges of census taking in small seasonal communities. When told about our plans to gather contact information on behalf of ***one primary resident in each cottage community*** to pass along to Elections Saskatchewan, she agreed that she too could pass along that same contact information to her census takers. That person could serve as a source of information to both the census taker this spring and to the enumerator this fall

If you are anxious to make sure that your primary residents are counted in the 2011 census count, reply to the letter from Elections Sask that was mailed to your community last week. ***The name and contact information for your community will be passed along both to Elections Sask and to Census Canada.*** Reply by email, to PARCS at saas@sasktel.net.

IN THIS ISSUE

Census is especially important for resort villages page 1

Getting ready for flooding pages 2-3

PARCS will be coming to you this summer page 4

A new time and place for our fall convention page 5

Registration for the summer workshops page 5

CONCERNS EXPRESSED ABOUT CENSUS TAKING IN A RESORT VILLAGE

The following email came from Ross Wilson, Administrator at the Resort Village of Lumsden Beach.

“For Lumsden Beach I have the following concerns:

* If an independent census taker shows up at Lumsden Beach unannounced in early May there will likely be almost no one there. Water service begins in early May and continues until early October.

* If someone like myself could meet the census person then I could make sure each cottage gets a form to fill out.

* It is always an issue that we do not have postal service hence no postal codes. People's mail boxes are over at Regina Beach.

* We do not have street name signs nor do cottages/properties have any number system. The property has official Block and Lot numbers, but they do not appear on any visual signage.

Any help or direction you can provide would be appreciated or should I be contacting someone else directly? Thanks.”

2. GETTING READY FOR FLOODING

In response to the question from the Resort Village of Melville Beach, we went back to Darryl Stevenson, the chair of the Board of the Organized Hamlet of Burgis Beach at Good Spirit Lake. Last fall, at our 2010 Convention, Darryl spoke about how his community had coped with the massive flooding at their community.

Darryl began by referring readers to this web site¹ <http://www.gov.mb.ca/emo/home/prepare/sandbag.html?print> which does contain a lot of good information. However, Darryl had a wealth of practical advice based on his recent experience and we are passing that advice along to our readers.

First, Darryl applauded this community's ***plan to start early***, pointing how much easier it is to build a dike when you are not building it in the rising flood water! "A coordinated community effort will yield much better results than an 'every homeowner for himself' approach with cottage owners competing for precious resources as the waters rise."

In planning for the ***number of sandbags***, Darryl pointed out that a dike that is 2 feet high needs to have a base that is 4 feet wide, while a dike that is 3 feet high needs to have a base that is 5 feet wide². Sand bags are 20" long and 608 inches high (depending how full they are filled). One of the sources that we consulted on the web suggested the rule for calculating the number of sandbags as shown in the inset. Darryl recalled that last spring one homeowner at Burgis Beach filled 12,000 bags to protect his property!

Second, Darryl offered the following insight about ***ordering materials and arranging personnel*** for dike building:

- Your local RM will have information on companies that supply sand bags.
- Typically, orders for sandbags are received the next day after the order is placed. These companies are used to filling rush orders.
- Order bags with attached ties. Trying to save money by using twine results in ties slipping and bags spilling.
- Costs of bags are covered under the Emergency Flood Damage Reclamation Program (for more information, go to the Sask Watershed Authority website at www.swa.ca).
- Order fine sand and store it where it won't get wet from rain – wet sand is too heavy to handle (ideally inside a Quonset, at the very least, under tarps).
- Investigate the lease of a bagging machine so that you can have a bobcat fill the hopper of the machine. (Rather than filling all the bags by hand with spades.)

CONCERNS ABOUT PREPARING FOR SPRING FLOODING

The following email came from Dave Boulding, Mayor at the Resort Village of Melville Beach.

"Last fall at PARCS convention, one of the speakers gave a talk on their village being flooded. Now this year lots more communities might be in for flooding. Our village is one of those with high water levels from last fall and rivers running all winter leaves our lake at the highest level ever. Even the old timers can't remember it being so high. Do you know or can you pass on names for info on how many sand bags are needed for say 500' if water rises 2'-3'. I have no idea of how many are needed or even how to stack. If you can help with some info so we can order sand and bags."

Estimating Bag Requirements for 100 ft of dike with a base that is 3x the height:

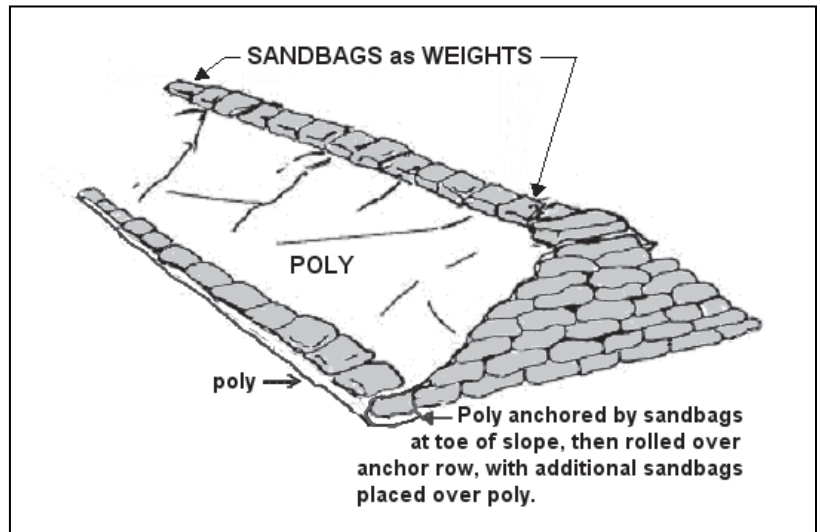
<u>Height</u>	<u>Number of bags required</u>
1 Foot	800
2 Foot	2,000
3 Foot	3,400

¹ Also download the handout on dike construction

² The base of the dike must be 2 feet wider than its height.

- You will need to line up a cadre of at least 20 to 30 volunteers willing to work at least one long weekend, to fill enough bags for a 500 ft dike. You will need other volunteers to make coffee and meals, transport materials. Decide on the location for setting up meals. People will soon get very tired.
- If you can set up your assembly site close to where the dike will be built, you will be able to avoid having to move the heavy sandbags a long distance after filling. You will need a lot of space for setting up this assembly area.
- Sand bags should not be filled too full; Darryl recommends between half to two thirds full. Otherwise volunteers simply will not be able to handle the sandbags.

Third, with regard to **building the dike**, Darryl suggested one improvement over the diagram in the insert. His dike builders spread the poly (8 or 10 ft wide) on the ground to prevent the bottom leakage³ from being wicked up into the dike⁴. The poly was then folded over on the lake side of the dike and anchored with sandbag weights on top. Extra poly hung down the land side of the dike and could be folded back if it became necessary to build the dike up higher.



Darryl pointed out that the dike will be affected by the amount of wave action. Villages on the north or west side of the lake should fare better than those on the south or east side, with our prevailing north westerly winds.

Even if the dike holds back most of the water, there will be seepage. Communities should have pumps lined up. Gas pumps have to be refuelled every hour. Regular pumps can be used if there is a power source nearby. Slough pumps (trash pumps) can be run off a tractor through the night.

When the flooding comes, it will come fast, advises Darryl. That will be the time to declare the State of Emergency and contact the Provincial Fire Commissioner's Office. They will take control and help you get resources. But if you can build your dikes in advance, your cottage owners will applaud your foresight!



Notice the failed dike around a cottage site at Burgis Beach last spring. Building a community dike along the lakeshore and building it now before the flood arrives may prevent a similar event for your community.

³ Every dike will leak, says Darryl.

⁴ Building the dike now, before the flooding, is advisable – but means that snow cover will have to be scraped away from the site before starting.

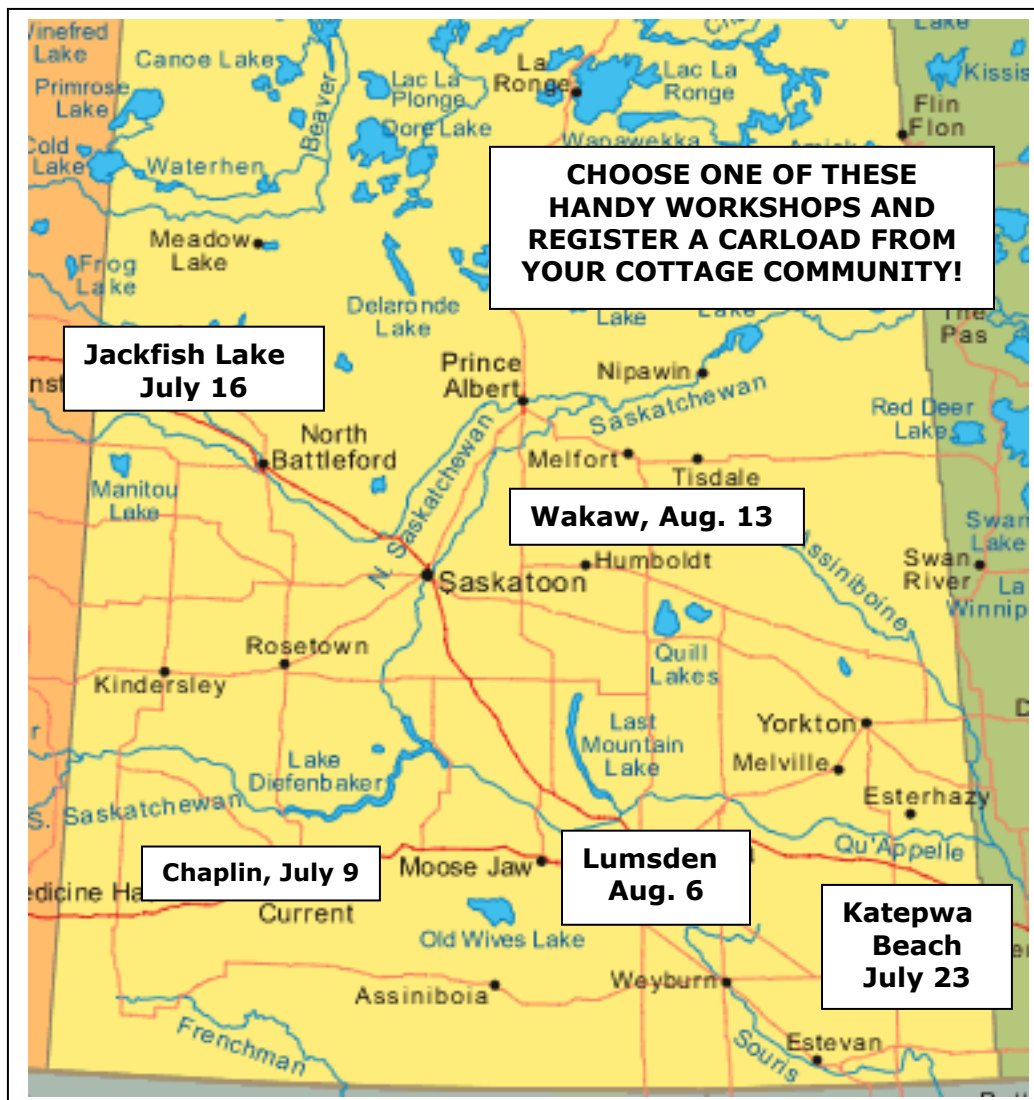
3. PARCS WILL BE COMING TO YOU THIS SUMMER

This summer PARCS will bring a workshop to five handy locations around the province. Our reasons for taking PARCS on the road are twofold:

First, we want to provide a cost effective way for a large group from each cottage community to find out more about PARCS and to have a say in PARCS' future directions. We are encouraging every community to register a carload of delegates for one of these workshops (See registration form on page 3). ***A carload of 5 cottage folks can register for this workshop for under \$100 (lunch included)! Also, because you should be able to choose a workshop that is close to home and because workshops don't begin until 10:00 a.m., most communities will not have to pay for hotel expenses.***

Secondly, we want to provide an ***opportunity for cottage owners to be heard.*** We are hoping to include an opportunity for you to voice your concerns to a government member, along with a session where you can address questions to a representative from Saskatchewan Environment.

Each workshop is scheduled for a Saturday this summer. Each will also feature a presentation on ***ISSUES FACING COTTAGE COMMUNITIES TODAY.***



4. A NEW TIME AND PLACE FOR OUR ANNUAL CONVENTION

We have plans for a different time and location for our annual fall convention. Experience has taught us the futility of trying to schedule a convention during the month prior to an election. Speakers from the various ministries are not allowed to attend sessions during that period and government agencies cannot respond to sponsorship requests.

Because we are encouraging you to send a large delegation to the summer workshop, we have cut back on the traditional part of convention and have planned for only one night's hotel stay. The speaker at the banquet on Friday evening will be Allan Casey, award-winning author of Lakeland. We hope to include a *Members' Fair* on Saturday.

**PARCS CONVENTION and
Annual Meeting**
Friday, Nov. 18 (evening)
Saturday, Nov. 19 (all day)
MANITOU SPRINGS RESORT
*More information to follow
in the April newsletter.*

A cottage owner wrote: "We are in the process of working on an Official Community Plan. Can you tell me if any other communities are working to develop a plan for ATV use?" We sent a sample Zoning Bylaw (part of the Official Community Plan) in which ATVs were addressed in a general way, saying that Council had the right to set the rules but requiring that Council recognize the potential damage from ATVS. We also sent a sample bylaw which dealt specifically with ATVs.

A resort village administrator asked for our help in reaching Census Canada and we made the arrangements described on page one.

A resort village mayor asked for information about building dikes and we contacted another PARCS member for information to pass along to you.

PARCS works to help members share information with other members.

5. REGISTER NOW FOR ONE OF THE SUMMER WORKSHOPS

To register for the summer workshops, detach this form and send the following information along with your cheque:

Name of Cottage Community: _____

Contact Name and email or phone #: _____

We plan to send a carload to the following workshop (✓ check one):

- Saturday, July 9, 10:00 a.m. in Chaplin (Legion Hall)
- Saturday July 16, 10:00 a.m. at Jackfish Lake (Community Hall)
- Saturday, July 23, 10:00 a.m. at Katepwa Beach (Community Hall)
- Saturday, Aug. 6, 10:00 a.m. at Lumsden (Legion Hall)
- Saturday, Aug. 13, 10:00 a.m. at Wakaw (Legion Hall)

Enclosed please find a cheque for:

- \$25 for one participant
- \$50 for two participants
- \$65 for three participants
- \$80 for four participants
- \$95 for five participants

*Register your community
NOW to reserve your places;
some limited seating.*